



**INTERNATIONAL
GEMOLOGICAL
INSTITUTE**

**ELECTRONIC COPY LABORATORY GROWN
DIAMOND REPORT**

**IGI LABORATORY GROWN
DIAMOND ID REPORT**

January 11, 2022
IGI Report Number **LG510173408**

LABORATORY GROWN DIAMOND REPORT

LG510173408

ROUND BRILLIANT

6.19 - 6.23 X 3.93 MM

IGI LABORATORY GROWN DIAMOND IDENTIFICATION REPORT

January 11, 2022
IGI Report Number **LG510173408**
Description **LABORATORY GROWN DIAMOND**
Shape and Cutting Style **ROUND BRILLIANT**
Measurements **6.19 - 6.23 X 3.93 MM**

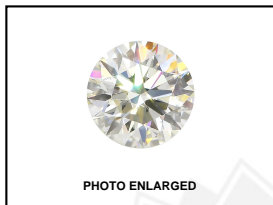


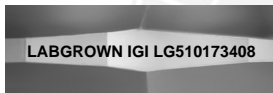
PHOTO ENLARGED

Carat Weight 0.95 CARAT
Color Grade D
Clarity Grade VVS 2
Cut Grade EXCELLENT
Polish EXCELLENT
Symmetry EXCELLENT
Fluorescence NONE
Inscription(s) **LABGROWN IGI
LG510173408**

Comments: As Grown - No indication of post-growth treatment.
This Laboratory Grown Diamond was created by High Pressure High Temperature (HPHT) growth process.
Type II

GRADING RESULTS

Carat Weight 0.95 CARAT
Color Grade D
Clarity Grade VVS 2
Cut Grade EXCELLENT



LASERSCRIBESM

ADDITIONAL GRADING INFORMATION

Polish EXCELLENT
Symmetry EXCELLENT
Fluorescence NONE
Inscription(s) **LABGROWN IGI LG510173408**



**IGI LABORATORY GROWN
DIAMOND ID REPORT**

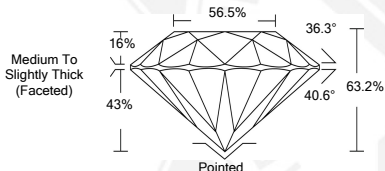
January 11, 2022
IGI Report Number **LG510173408**

ROUND BRILLIANT

6.19 - 6.23 X 3.93 MM

Carat Weight 0.95 CARAT
Color Grade D
Clarity Grade VVS 2
Cut Grade EXCELLENT
Polish EXCELLENT
Symmetry EXCELLENT
Fluorescence NONE
Inscription(s) **LABGROWN IGI
LG510173408**

Comments: As Grown - No indication of post-growth treatment.
This Laboratory Grown Diamond was created by High Pressure High Temperature (HPHT) growth process.
Type II



THIS DOCUMENT WAS PRODUCED WITH THE FOLLOWING SECURITY MEASURES: SPECIAL DOCUMENT PAPER, INK SCREENS, WATERMARK, BACKGROUND DESIGN, HOLOGRAM AND OTHER SECURITY FEATURES NOT LISTED AND DO EXCEED DOCUMENT SECURITY INDUSTRY GUIDELINES.

For Terms & Conditions and to verify this report, please visit www.igi.org