



ELECTRONIC COPY

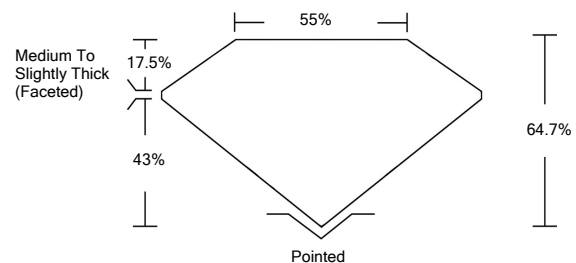
LABORATORY GROWN DIAMOND REPORT

| | |
|---------------------------------------|-------------------------------------|
| March 26, 2022 | |
| IGI Report Number | LG519269644 |
| Description | LABORATORY GROWN DIAMOND |
| Shape and Cutting Style | SQUARE CUSHION BRILLIANT |
| Measurements | 6.63 X 6.40 X 4.14 MM |
| GRADING RESULTS | |
| Carat Weight | 1.51 CARAT |
| Color Grade | D |
| Clarity Grade | VVS 2 |
| ADDITIONAL GRADING INFORMATION | |
| Polish | EXCELLENT |
| Symmetry | EXCELLENT |
| Fluorescence | NONE |
| Inscription(s) | LABGROWN IGI LG519269644 |

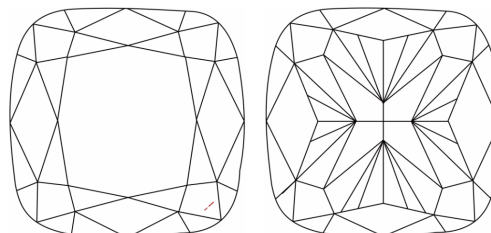
Comments: As Grown - No indication of post-growth treatment.
This Laboratory Grown Diamond was created by High Pressure High Temperature (HPHT) growth process. Type II

LG519269644

PROPORTIONS



CLARITY CHARACTERISTICS

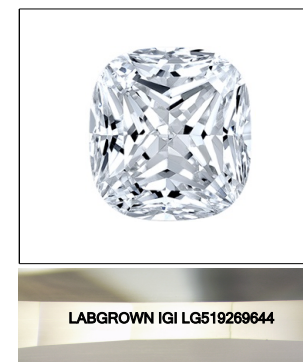


KEY TO SYMBOLS

Red symbols indicate internal characteristics.
Green symbols indicate external characteristics.

GRADING SCALES

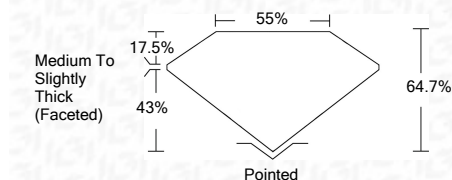
| | | | | | | |
|-----------------------------|------------------------------|-----------------------------|------------------------|-------------------|-----------|---|
| COLOR GRADING SCALE | CL | NC | FT | VL | LT | |
| | COLORLESS D-F | NEAR COLORLESS G-J | FAINT K-M | VERY LIGHT N-R | LIGHT S-Z | |
| CLARITY (10x) GRADING SCALE | FL | IF | VVS | VS | SI | I |
| | FLAWLESS INTERNALLY FLAWLESS | VERY VERY SLIGHTLY INCLUDED | VERY SLIGHTLY INCLUDED | SLIGHTLY INCLUDED | INCLUDED | |



LASERSCRIBESM

Sample Image Used

| | |
|-------------------------|-------------------------------------|
| March 26, 2022 | |
| IGI Report Number | LG519269644 |
| Description | LABORATORY GROWN DIAMOND |
| Shape and Cutting Style | SQUARE CUSHION BRILLIANT |
| Measurements | 6.63 X 6.40 X 4.14 MM |
| GRADING RESULTS | |
| Carat Weight | 1.51 CARAT |
| Color Grade | D |
| Clarity Grade | VVS 2 |



| | |
|---------------------------------------|---------------------------------|
| ADDITIONAL GRADING INFORMATION | |
| Polish | EXCELLENT |
| Symmetry | EXCELLENT |
| Fluorescence | NONE |
| Inscription(s) | LABGROWN IGI LG519269644 |

Comments: As Grown - No indication of post-growth treatment.
This Laboratory Grown Diamond was created by High Pressure High Temperature (HPHT) growth process. Type II



| | |
|----------------|--|
| March 26, 2022 | IGI Report No. LG519269644 |
| | SQUARE CUSHION BRILLIANT |
| | 6.63 X 6.40 X 4.14 MM |
| | Carat Weight 1.51 CARAT |
| | Color Grade D |
| | Clarity Grade VVS 2 |
| | Depth 64.7% |
| | Table 55% |
| | Girdle Medium To Slightly Thick (Faceted) |
| | Culet Pointed |
| | Polish EXCELLENT |
| | Symmetry EXCELLENT |
| | Fluorescence NONE |
| | Inscription(s) LABGROWN IGI LG519269644 |
| | Comments: As Grown - No indication of post-growth treatment. This Laboratory Grown Diamond was created by High Pressure High Temperature (HPHT) growth process. Type II |