



# INTERNATIONAL GEMOLOGICAL INSTITUTE

## ELECTRONIC COPY LABORATORY GROWN DIAMOND REPORT

LG524248129

### LABORATORY GROWN DIAMOND REPORT

#### IGI LABORATORY GROWN DIAMOND IDENTIFICATION REPORT

April 23, 2022  
IGI Report Number LG524248129  
Description LABORATORY GROWN DIAMOND  
Shape and Cutting Style PEAR BRILLIANT  
Measurements 8.07 X 5.16 X 3.11 MM

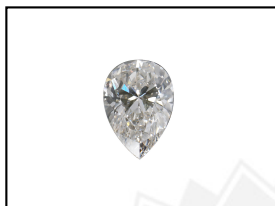
#### GRADING RESULTS

Carat Weight 0.76 CARAT  
Color Grade E  
Clarity Grade VVS 2

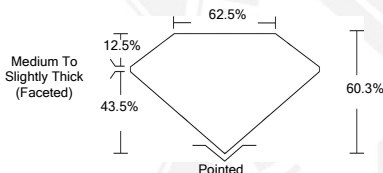
#### ADDITIONAL GRADING INFORMATION

Polish EXCELLENT  
Symmetry EXCELLENT  
Fluorescence NONE  
Inscription(s) LABGROWN IGI LG524248129

Comments: As Grown - No indication of post-growth treatment.  
This Laboratory Grown Diamond was created by High Pressure High Temperature (HPHT) growth process.  
Type II



**LASERSCRIBE<sup>SM</sup>**  
Sample Images Used



#### IGI LABORATORY GROWN DIAMOND ID REPORT

April 23, 2022  
IGI Report Number LG524248129  
**PEAR BRILLIANT**  
**8.07 X 5.16 X 3.11 MM**  
Carat Weight 0.76 CARAT  
Color Grade E  
Clarity Grade VVS 2  
Polish EXCELLENT  
Symmetry EXCELLENT  
Fluorescence NONE  
Inscription(s) LABGROWN IGI LG524248129

Comments: As Grown - No indication of post-growth treatment.  
This Laboratory Grown Diamond was created by High Pressure High Temperature (HPHT) growth process.  
Type II

#### IGI LABORATORY GROWN DIAMOND ID REPORT

April 23, 2022  
IGI Report Number LG524248129  
**PEAR BRILLIANT**  
**8.07 X 5.16 X 3.11 MM**  
Carat Weight 0.76 CARAT  
Color Grade E  
Clarity Grade VVS 2  
Polish EXCELLENT  
Symmetry EXCELLENT  
Fluorescence NONE  
Inscription(s) LABGROWN IGI LG524248129

Comments: As Grown - No indication of post-growth treatment.  
This Laboratory Grown Diamond was created by High Pressure High Temperature (HPHT) growth process.  
Type II



THIS DOCUMENT WAS PRODUCED WITH THE FOLLOWING SECURITY MEASURES: SPECIAL DOCUMENT PAPER, INK SCREENS, WATERMARK, BACKGROUND DESIGN, HOLOGRAM AND OTHER SECURITY FEATURES NOT LISTED AND DO EXCEED DOCUMENT SECURITY INDUSTRY GUIDELINES.

For Terms & Conditions and to verify this report, please visit [www.igi.org](http://www.igi.org)