



ELECTRONIC COPY

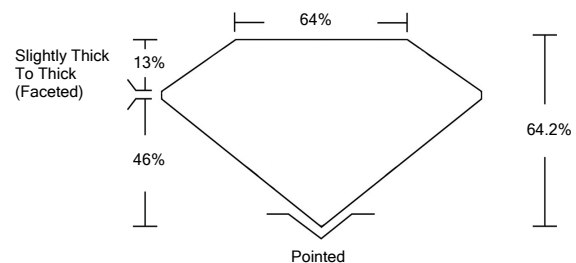
LABORATORY GROWN DIAMOND REPORT

LG530293687

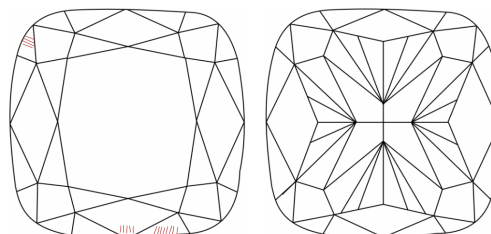
GRADING SCALES

COLOR GRADING SCALE	CL	NC	FT	VLT	LT	
	COLORLESS D-F	NEAR COLORLESS G-J	FAINT K-M	VERY LIGHT N-R	LIGHT S-Z	
CLARITY (10x) GRADING SCALE	FL	IF	VVS	VS	SI	I
	FLAWLESS INTERNALLY FLAWLESS	VERY VERY SLIGHTLY INCLUDED	VERY SLIGHTLY INCLUDED	SLIGHTLY INCLUDED	INCLUDED	

PROPORTIONS

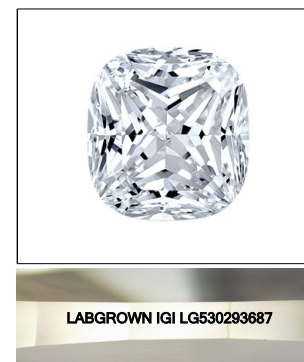


CLARITY CHARACTERISTICS



KEY TO SYMBOLS

Red symbols indicate internal characteristics.
Green symbols indicate external characteristics.



LASERSCRIBESM
Sample Image Used

May 25, 2022

IGI Report Number **LG530293687**

Description **LABORATORY GROWN DIAMOND**

Shape and Cutting Style **SQUARE CUSHION BRILLIANT**

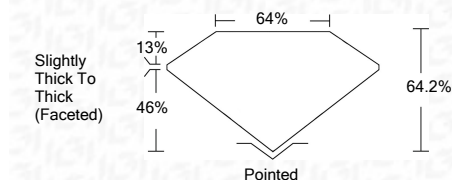
Measurements **6.84 X 6.76 X 4.34 MM**

GRADING RESULTS

Carat Weight **1.73 CARAT**

Color Grade **D**

Clarity Grade **VS 1**



ADDITIONAL GRADING INFORMATION

Polish **EXCELLENT**

Symmetry **EXCELLENT**

Fluorescence **NONE**

Inscription(s) **LABGROWN IGI LG530293687**

Comments: As Grown - No indication of post-growth treatment.
This Laboratory Grown Diamond was created by High Pressure High Temperature (HPHT) growth process.
Type II



May 25, 2022	IGI Report No. LG530293687	SQUARE CUSHION BRILLIANT	1.73 CARAT	D
	6.84 X 6.76 X 4.34 MM		VS 1	64.2%
	Carat Weight		64%	64%
	Color Grade		Slightly Thick To Thick (Faceted)	Pointed
	Clarity Grade		EXCELLENT	EXCELLENT
	Depth		EXCELLENT	EXCELLENT
	Table		NONE	NONE
	Girdle		LABGROWN IGI LG530293687	
	Culet			
	Polish			
	Symmetry			
	Fluorescence			
	Inscription(s)			
	Comments:			

As Grown - No indication of post-growth treatment.
This Laboratory Grown Diamond was created by High Pressure High Temperature (HPHT) growth process.
Type II

